

The input

```

\subject{Telemann, TWV 40:11}
\startlilypond
  \relative c' {
    \set Staff.instrumentName = flute
    \key fis \minor
    \time 3/4
    \partial 4
    r8 fis'8 | fis4. cis8 a cis | fis, a cis fis a fis |
    b, d fis b d b | eis,, gis cis eis gis b, |
    a fis' gis, fis' cis eis | fis,4 r8
    a' gis fis | e gis, a e' fis cis |
    d fis, gis b e d | cis4 \trill r8
    cis b a | b dis e gis cis, b |
    a e' dis fis b, a | gis4 \trill r8
  }
\stoplilypond

```

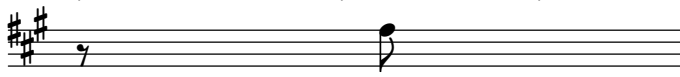
is typeset as


Telemann, TWV 40:11

The image shows a musical score for a flute part. It is written in treble clef, key signature of two sharps (F# and C#), and 3/4 time. The score consists of three staves. The first staff starts with a flute label and a 4-measure rest. The second staff continues the melody. The third staff includes trill ornaments (tr) over the first and last notes of the first and third measures respectively.

\startlilypond accepts options, as in

\startlilypond[staffsize=18, linewidth=14cm, indent=5cm, time=no, clef=no]:



It is also possible to mix text and music:  is a g.

TODO: The \lower in the example above should not be necessary.

Starlight (round)

Here is a sample with lyrics:



1. Star - light, star - bright, first star I see to-night; I

2. wish I may, I wish I might have the wish I wish to-night.